



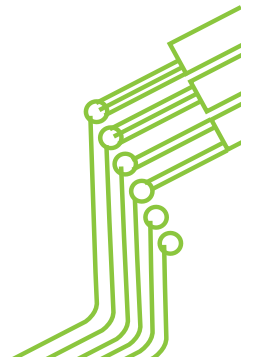
tree houses

not just a childhood fantasy

Swiss Family Tree House & The Berenstain Bears



Tree Houses bring back memories of childhood, adventure, and freedom.

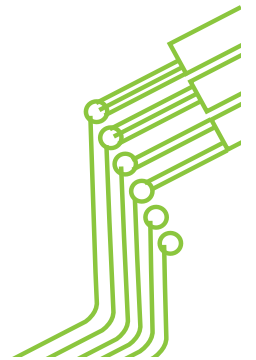
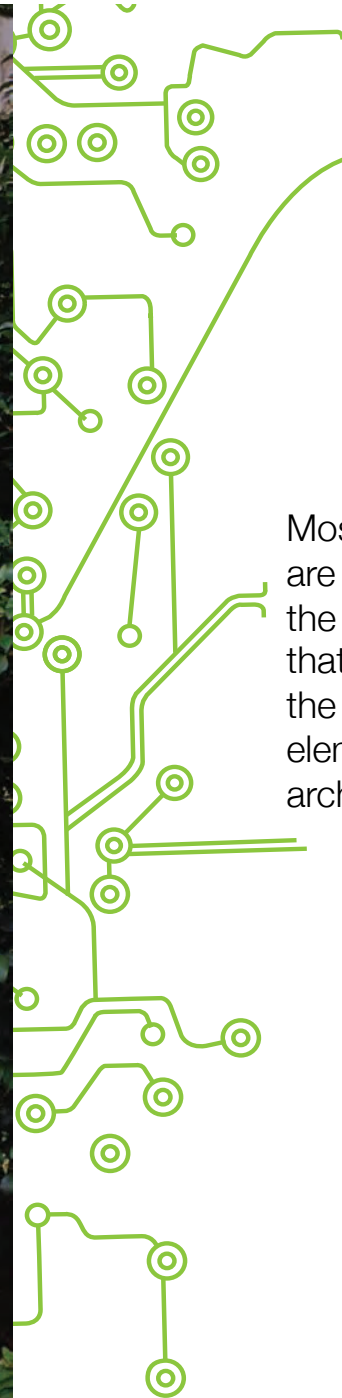




Classic Tree Houses

The fairytale of what a tree house should be.

Most of these tree houses are carefully nestled into the branches in such a way that they do not damage the tree itself and use its' elements as part of the architecture.



Tee Hee House

The tree house rests on 12 – by – 12 inch poles that were designed and constructed to conform to current building codes, while the seam metal roof is evocative of the surrounding houses in the area.

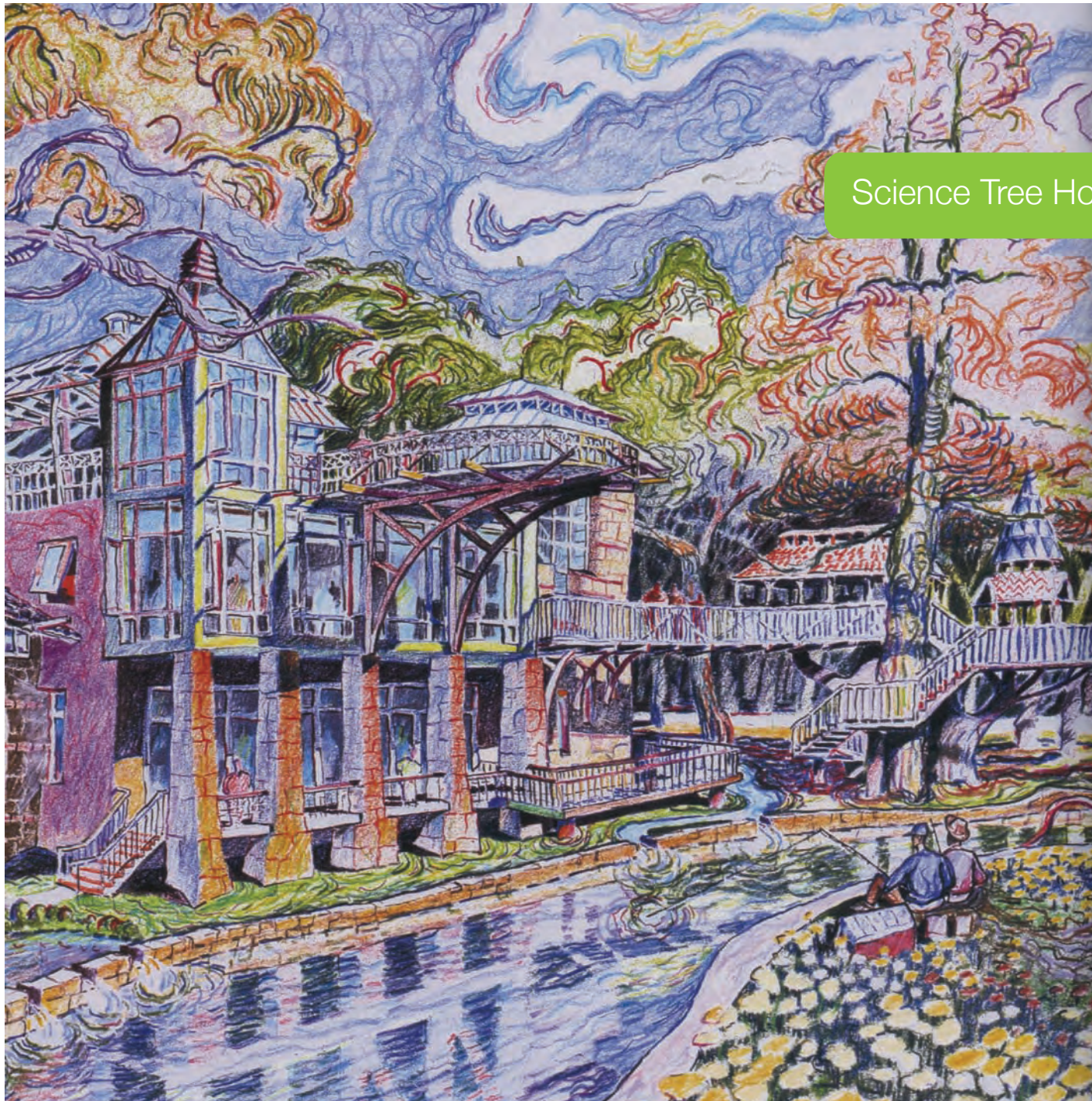
Constructed among oak trees, the house was professionally decorated and set among carefully landscaped grounds. It was described as a perfect escape.



Science Tree House

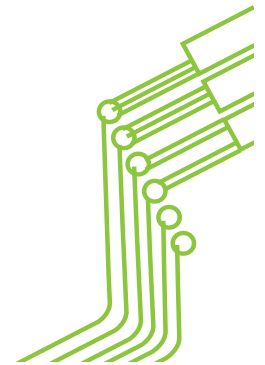
A multi-level open-air structure that was constructed among the existing live trees





Science Tree House, San Antonio Texas

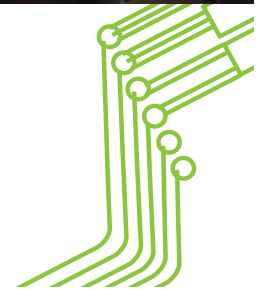
Sketch of the museum complex that includes the tree house

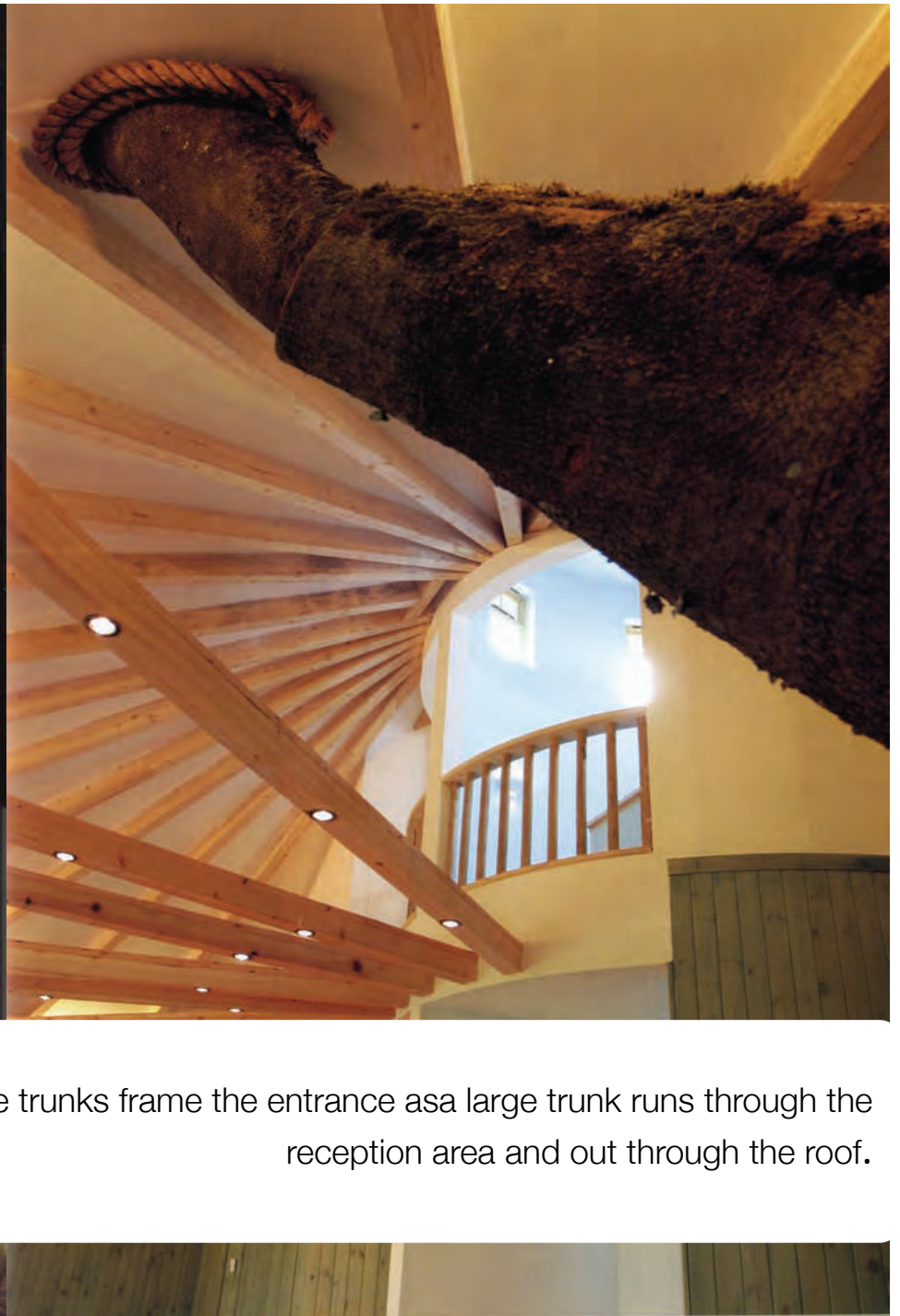
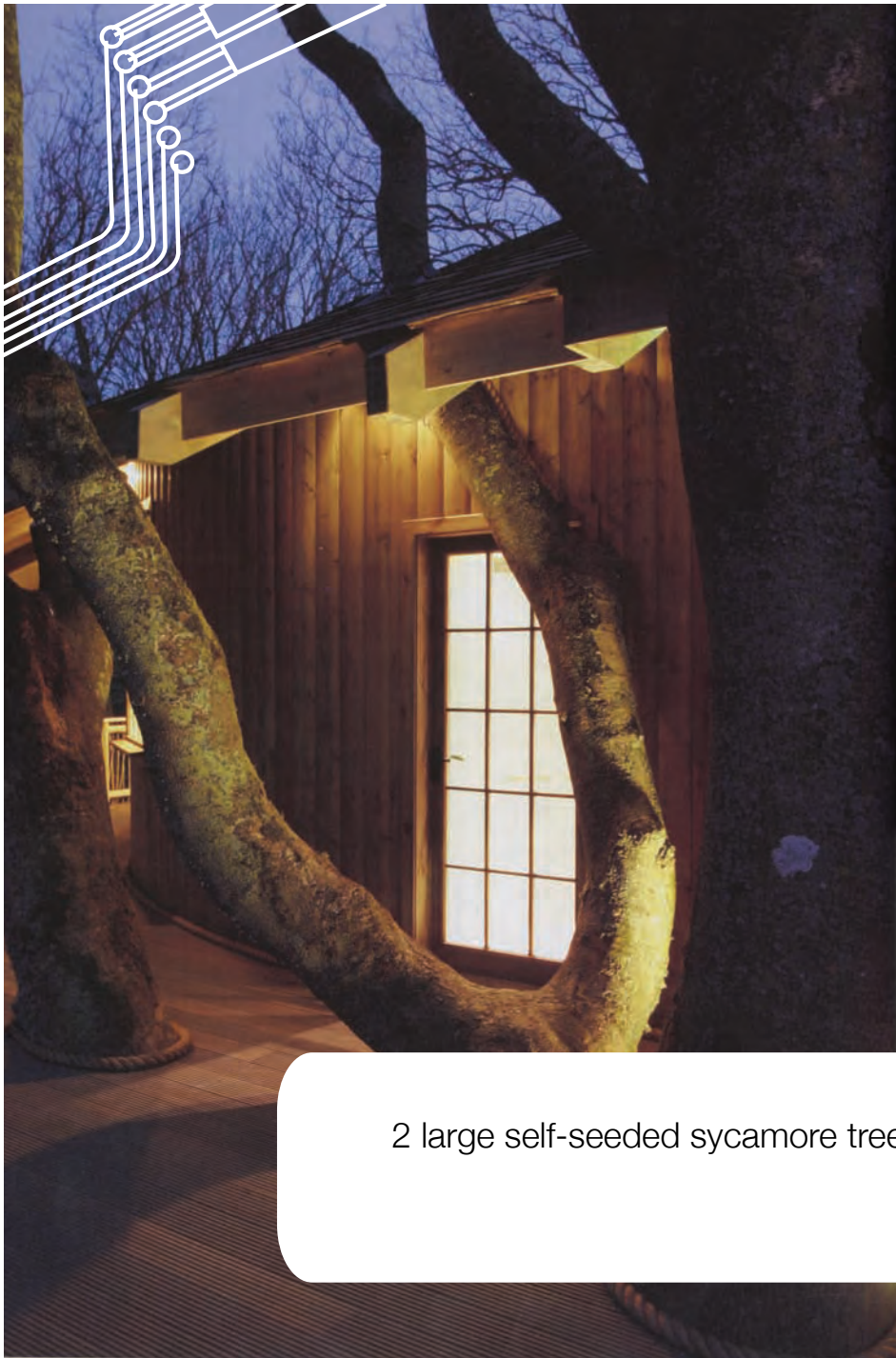




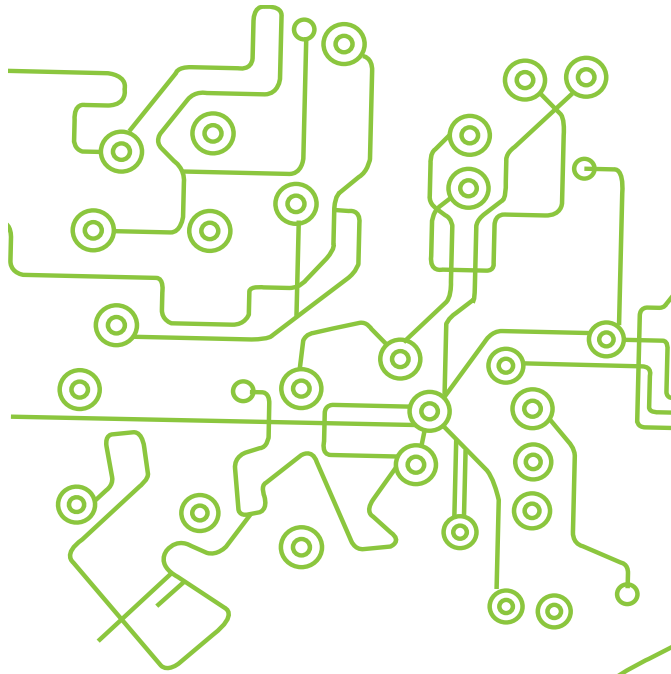
Ackergil Tower

One of the largest projects in the United Kingdom and can accommodate conference space and dining for 30 guests





2 large self-seeded sycamore tree trunks frame the entrance as a large trunk runs through the reception area and out through the roof.

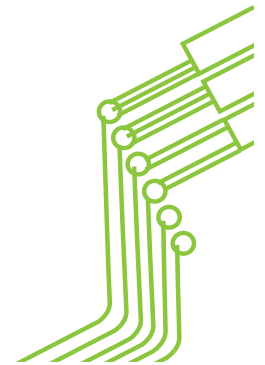


CLASSICS
PORTFOLIO





This tree house was constructed within a group of Scottish pines. It consists of an upper level children's tree house with a lower level for the parents.



This tree house is nestled in a sycamore tree overlooking a tennis court.



World's Largest Tree House

A 6,000-square-foot tree house soars 56 feet above the ground and is connected with 4,000-square-feet of suspended walkways.



Nescafé Tree House

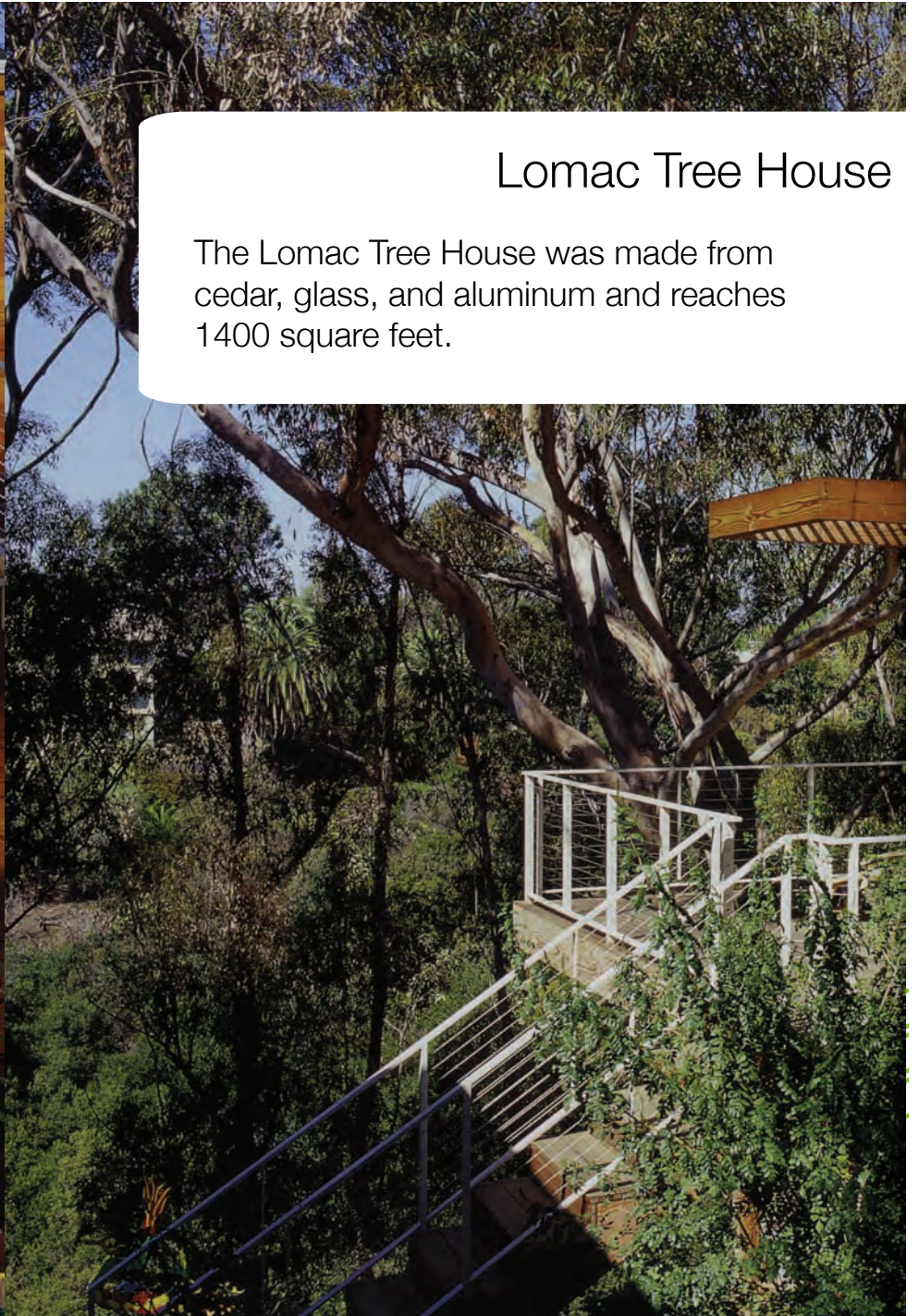
Nescafe was designed by Takashi Kobayashi, one of Japan's leading tree house creators.



Houses in Trees

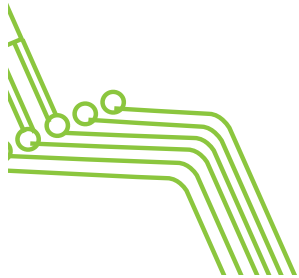
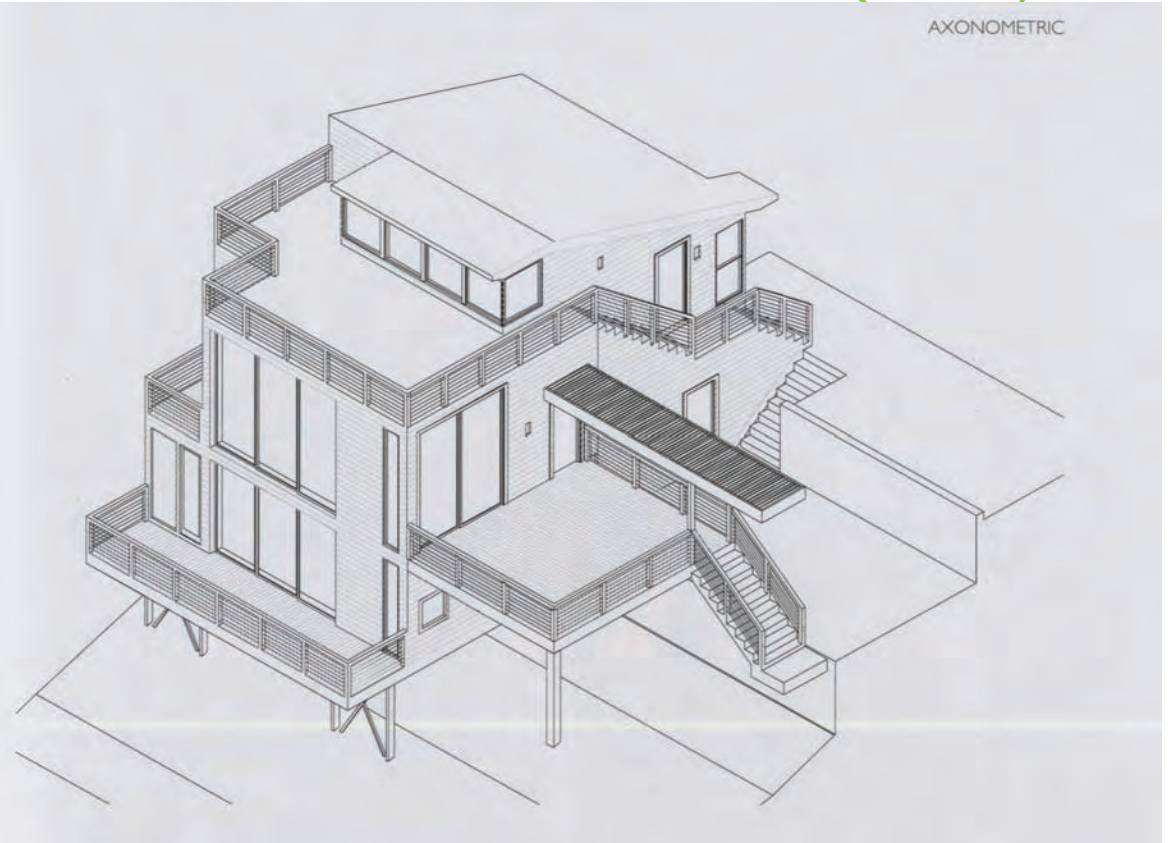
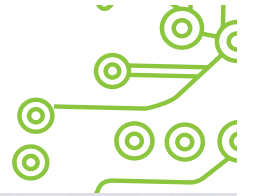
A hybrid that celebrates and integrates existing trees on the building site into the overall design or chooses to create an illusion of living high in the trees



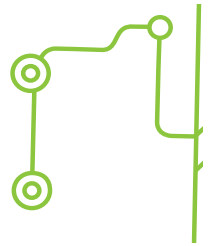


Lomac Tree House

The Lomac Tree House was made from cedar, glass, and aluminum and reaches 1400 square feet.

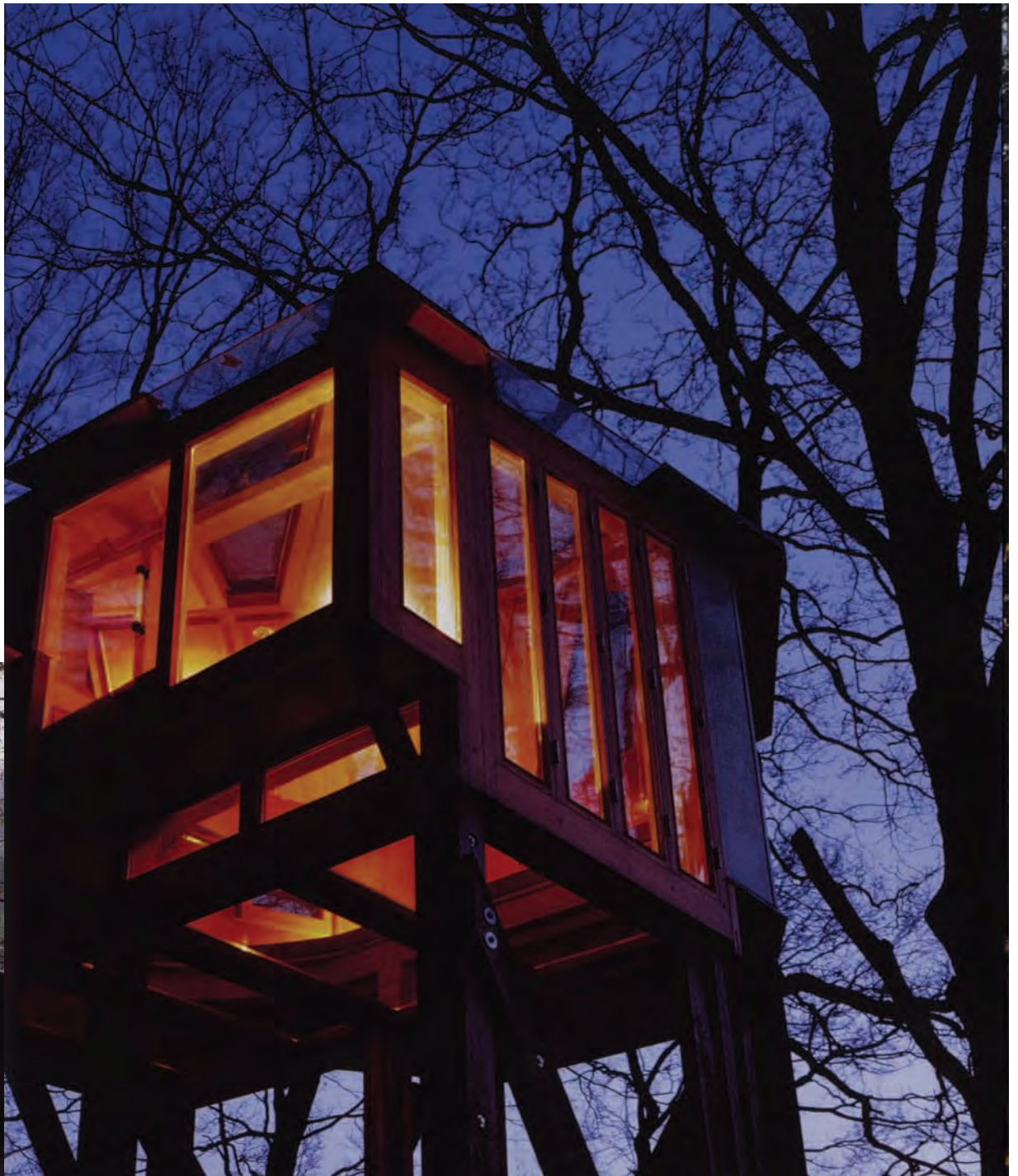


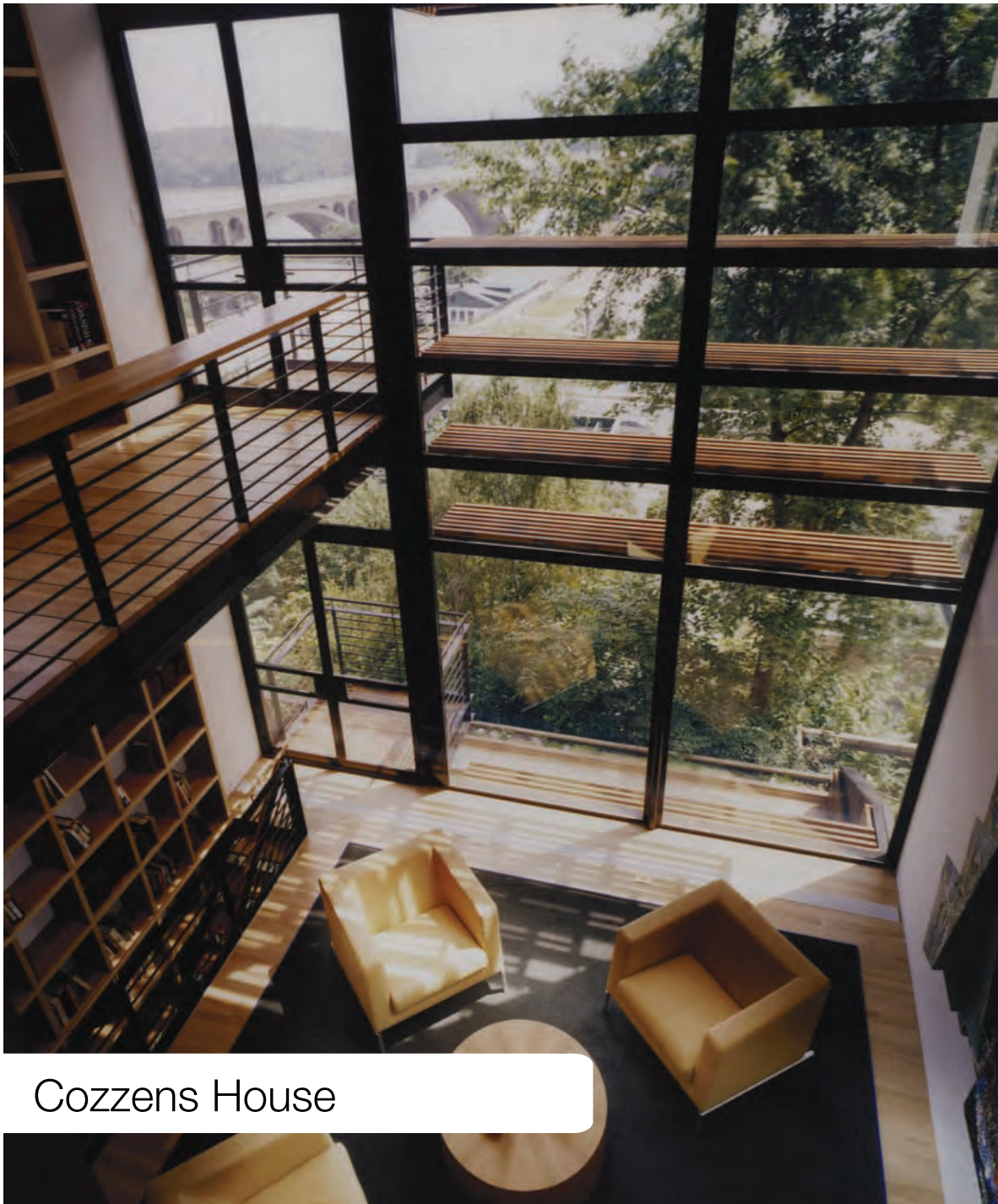
The interior rooms are deliberately kept open to allow sight from one room to another and through the trees to the canyon



Hexenhaus

Hexenhaus is German for witch's house and it is named this because it is located in an area famous in the Grimm Brothers' fairy tales.

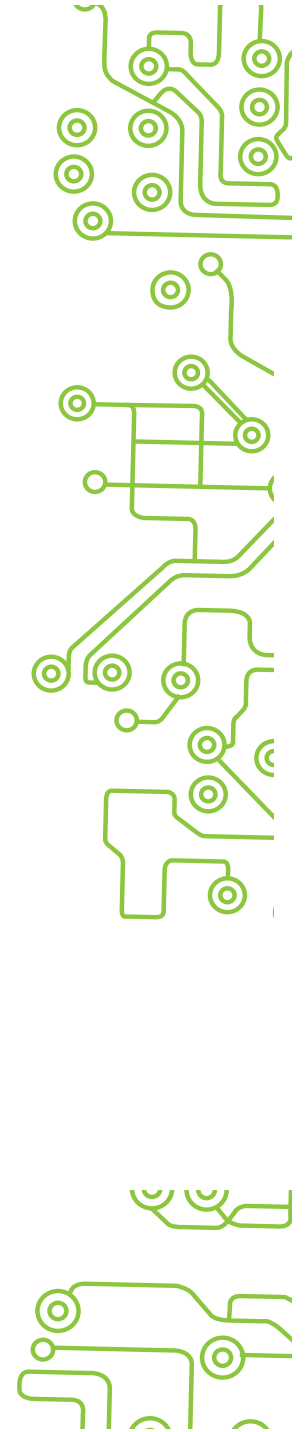




Cozzens House

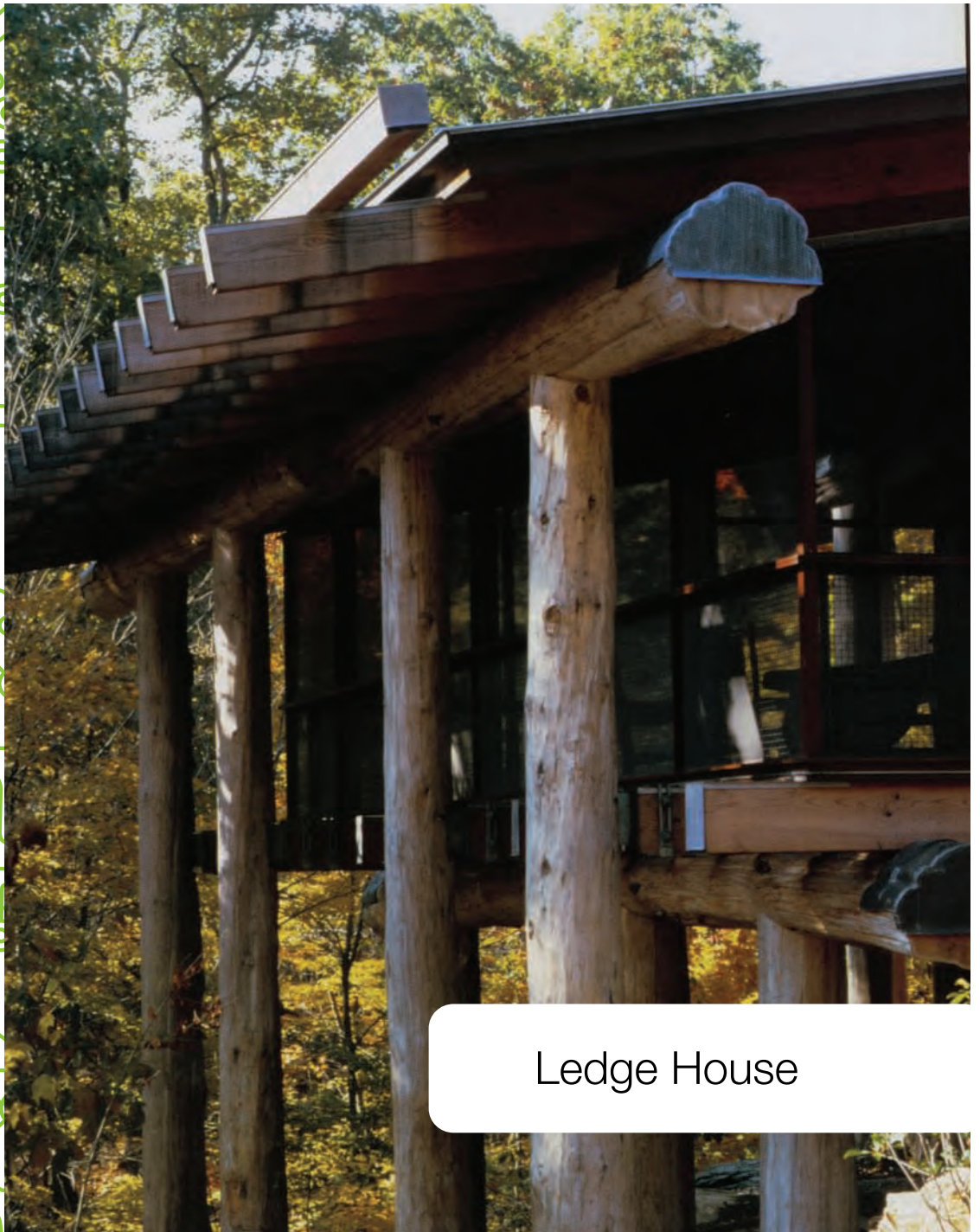
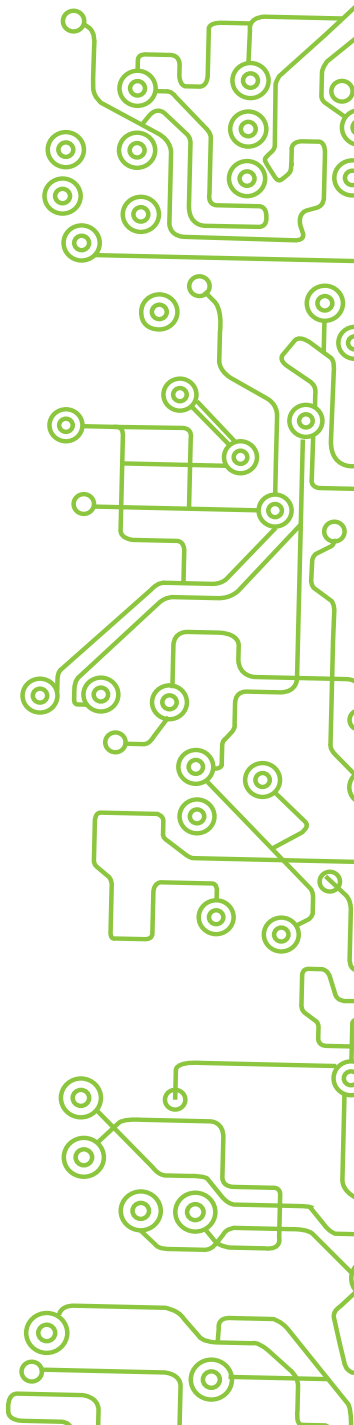
This house acts as a slender tower above the Potomac River and 60 feet long. Steel piers provide stability to the structure.

The interior is decorated by a wall of books that extends through three stories climbing parallel to the stairs.



This house was constructed from cedar logs. The natural look of the log timber post - and - construction on the exterior gives the house the illusion that it is growing out of the forest.

Fir timbers and white cedar logs define the interior. Perched on the ledge, the house enjoys a commanding view of the treetops.



Ledge House

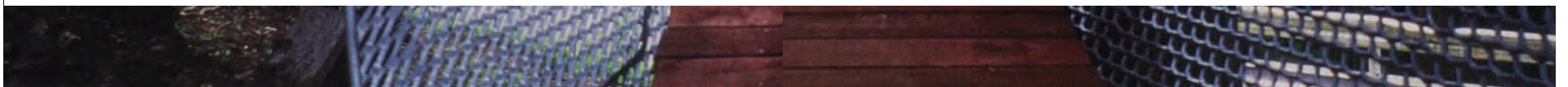


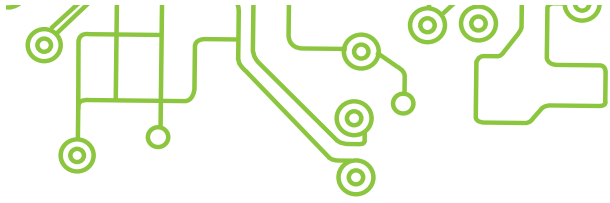


Experimental Tree Houses

Accessible Tree House

A tree house for the physically disabled





Spherical Tree House

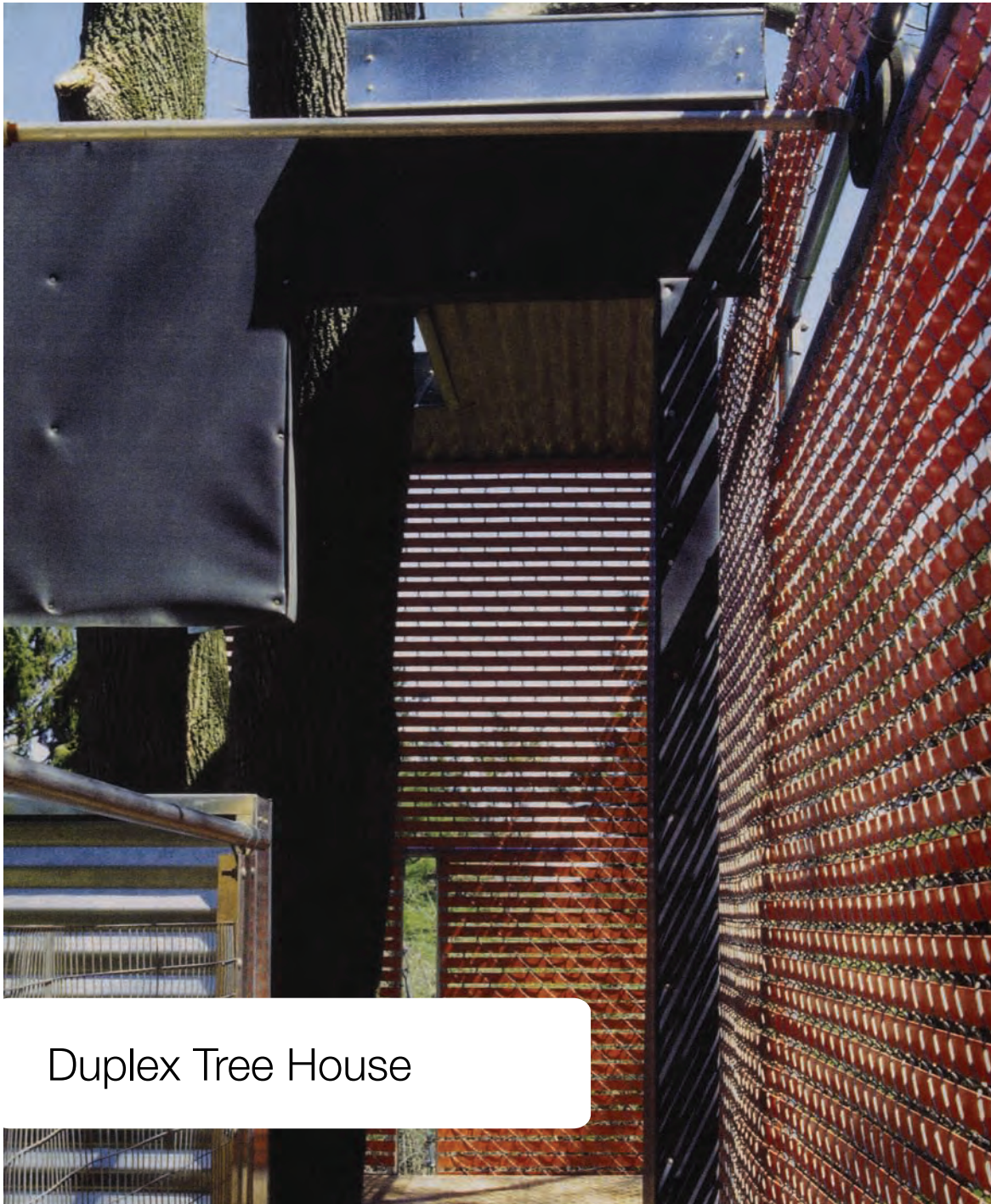
This tree house is a 9-foot diameter sphere constructed of yellow cedar strips covered with two layers of woven fiberglass.





The house is supported by a set of ropes attached to separate trees that evenly distributed the 500 pound load. If one rope breaks the rest of the ropes will still support it.





Duplex Tree House

The architect designed a structure that connected the two tree houses, creating a unified structure. They are connected by a z-shaped bridge.

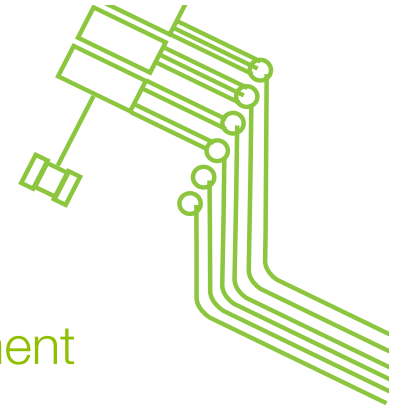
Industrial materials, such as corrugated galvanized steel, rubber roofing, and corrugated fiberglass, were used to evoke a 'found object' feel.





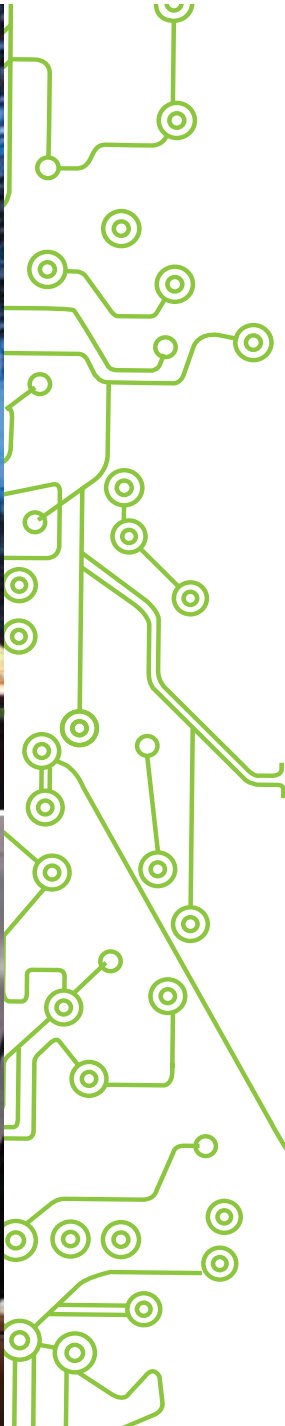
The Dome Experiment

The house is perched in an olive tree and uses natural pine, cork and clay for construction. This structure combines the general form of a geodesic dome with the sustainability of an earth ship.



Le Lit Perché

Instead of a house, this is a roomy 42-square-foot bed perched on a red cedar platform within a railing of slender steel cables. It features a pulley system that raises and lowers a basket that can be filled with food, wine or other supplies.

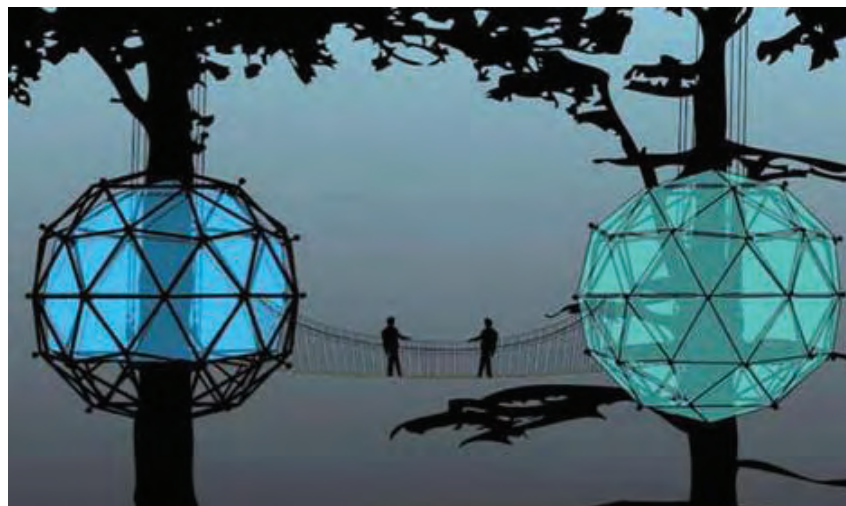
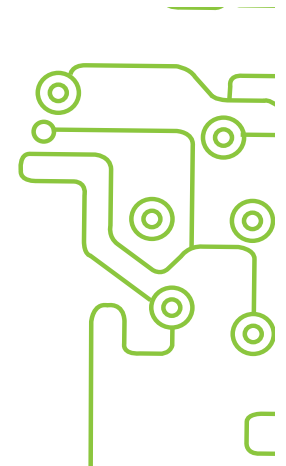
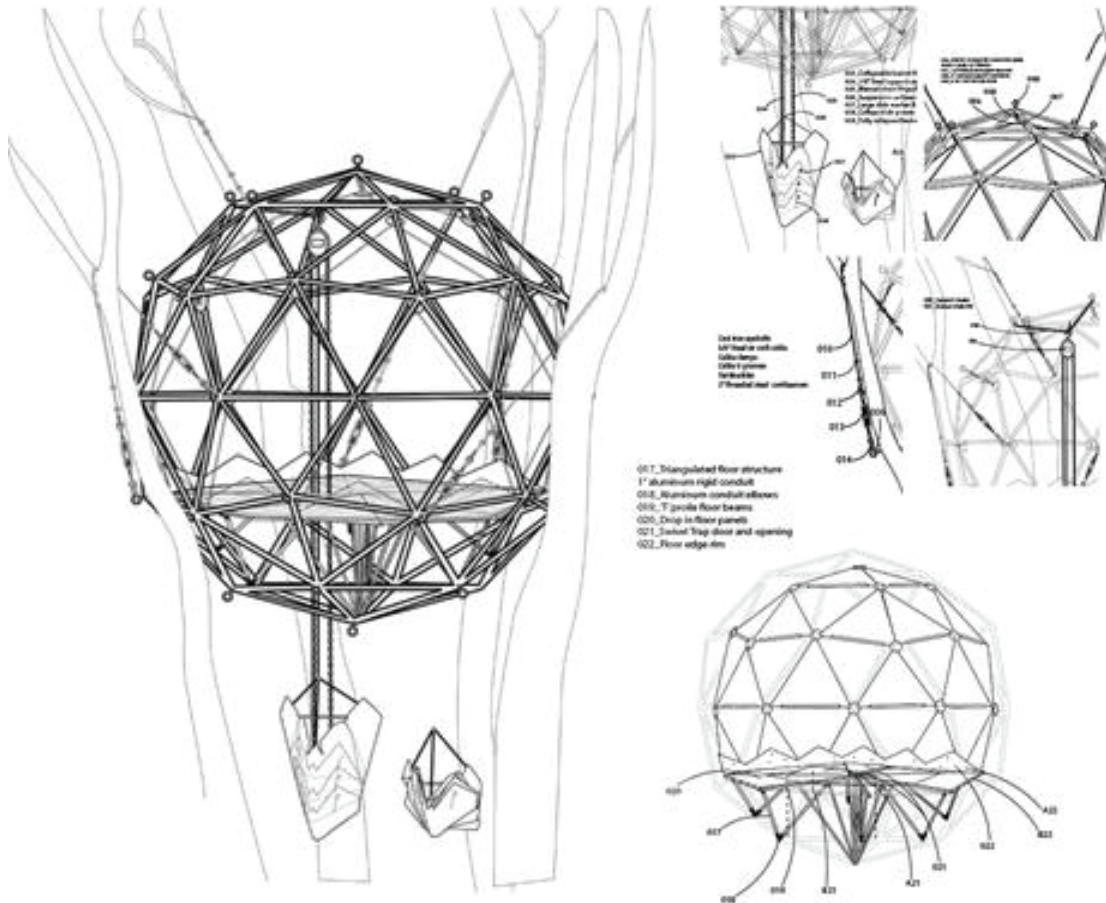


Dustin Feider, the designer, wanted to create a tree house that would be good for the tree, the environment and the deep human need to reconnect with nature and our primordial roots

All the materials used for the tree house are entirely recycled and sustainable can accommodate any tree, single trunk, multi trunk, or several trees.

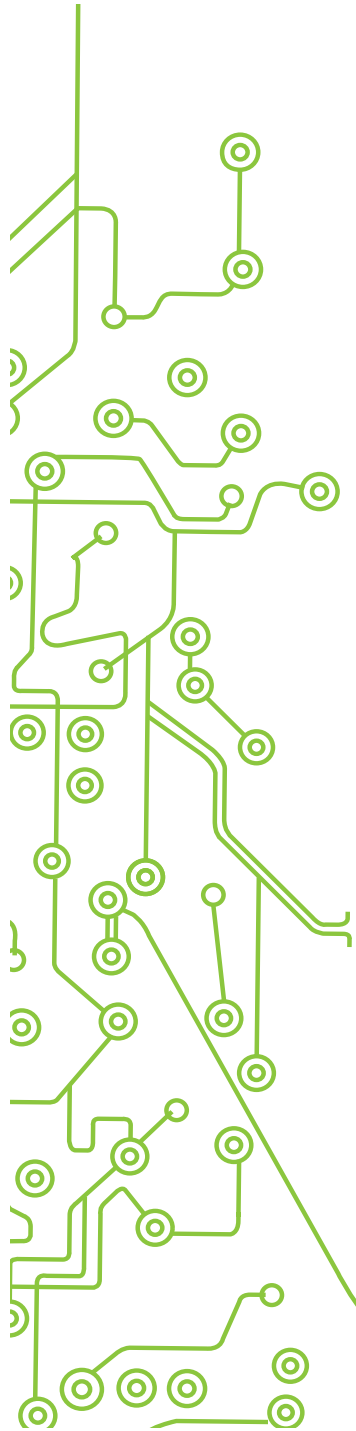
Its modular design allows for materials to be easily switched out accommodating style, size and functional design preferences and interiors

O2 Treehouse



O2 Sustainability offers design and installations services or can be ordered as a self-installable kit.

The tree house is light in weight, safe, and offers a large interior space suspended between the tree's branches.



Because you probably don't have money nor the time to build one of these fabulous tree houses, here are some tips on embracing your inner child and building your own.

Select a Tree

Consider the roots
the foundation

the trunk
foundation above ground

the branching



Trees with 90 degree limb angles

Oaks; (White Oak - *Quercus alba*) (Post Oak - *Q. stellata*) (Bur Oak - *Q. macrocarpa*)
American plane tree / Sycamore - *Platanus occidentalis*.
Tamarack / eastern Larch - *Larix laricina*.

Trees with 45 degree limb angles

Oaks; (Black Oak - *Quercus velutina*) (Scarlet Oak - *Q. coccinea*)
Maples; (Red Maple - *Acer rubrum*) (Silver Maple - *A. saccharinum*)
(Sugar Maple - *A. saccharum*)
Hickorys; (Bitternut Hickory - *Carya cordiformis*) (Pignut Hickory - *C. glabra*)
(Shagbark Hickory - *C. ovata*) (Pecan - *C. illinoensis*)
Walnuts; (Eastern Black Walnut - *Juglans nigra*) (Butternut (walnut) - *J. cinerea*)

